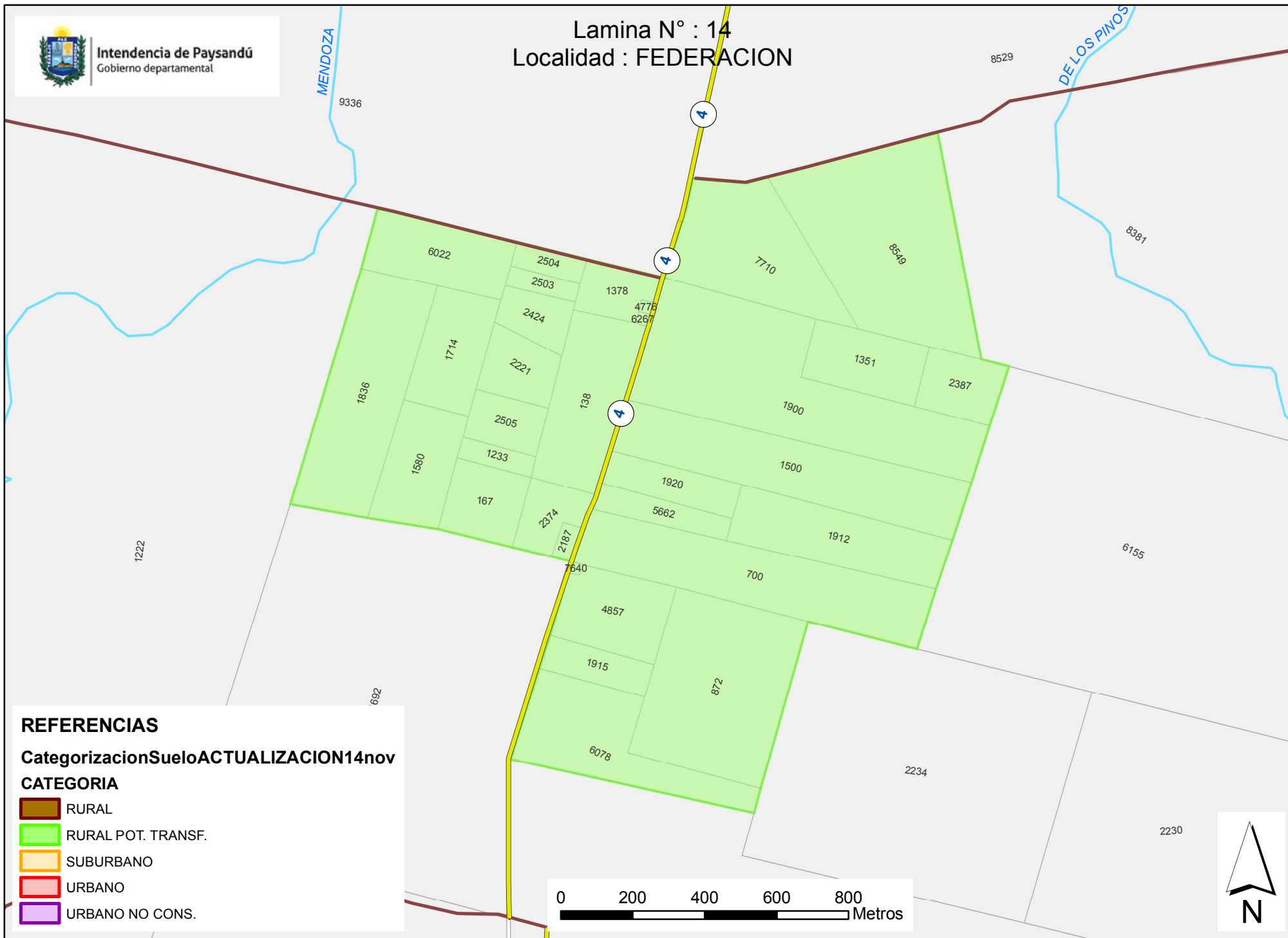




Intendencia de Paysandú
Gobierno departamental




Lamina N° : 14
Localidad : FEDERACION



REFERENCIAS

Categorización Suelo ACTUALIZACIÓN 14 nov

CATEGORIA

-  RURAL
-  RURAL POT. TRANSF.
-  SUBURBANO
-  URBANO
-  URBANO NO CONS.

